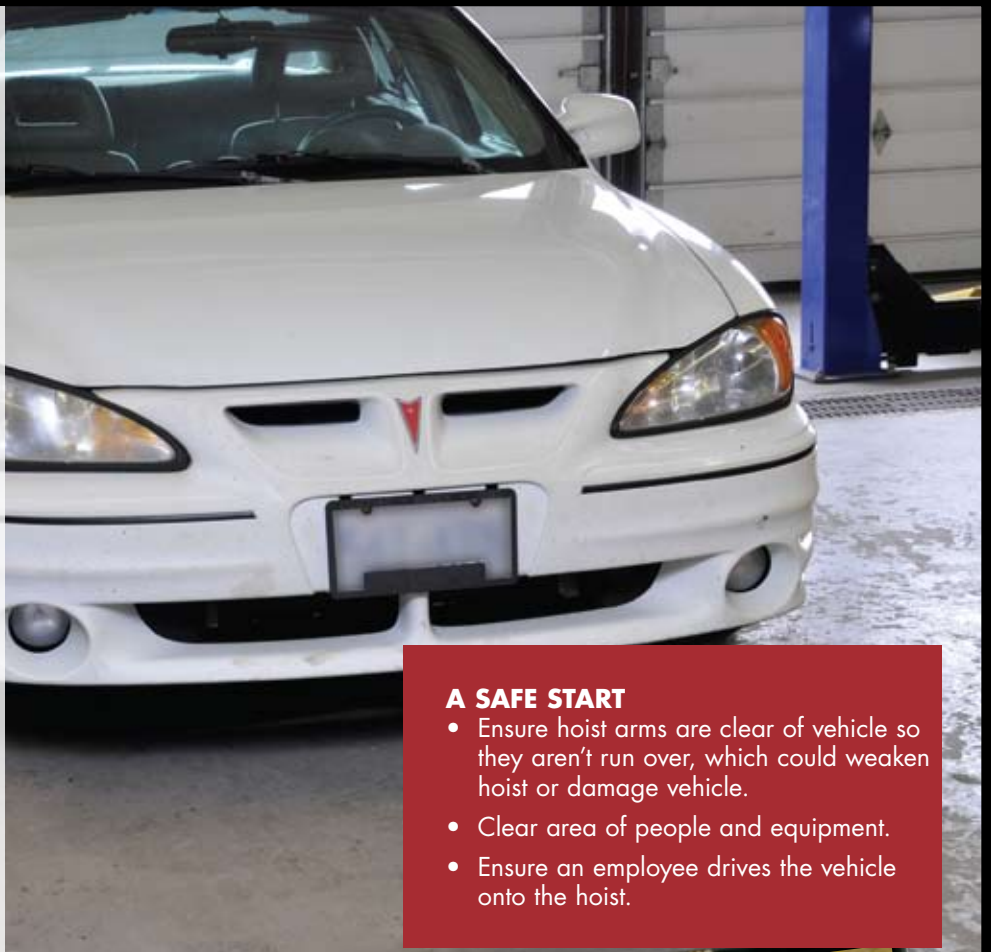
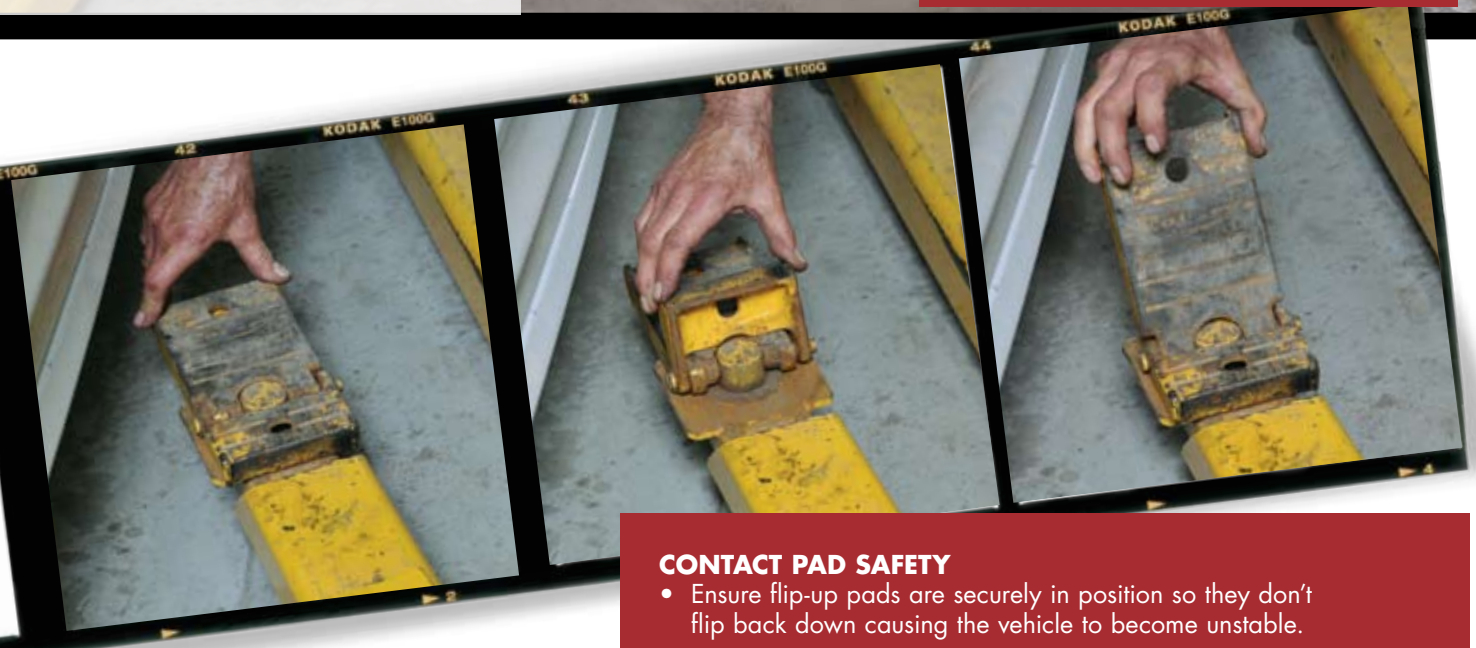


Shop owners and managers need to take seriously their legislated obligation to ensure technicians who operate hoists have received sufficient training in order to prevent potentially serious accidents from injuring their most valuable assets—their employees.



A SAFE START

- Ensure hoist arms are clear of vehicle so they aren't run over, which could weaken hoist or damage vehicle.
- Clear area of people and equipment.
- Ensure an employee drives the vehicle onto the hoist.



CONTACT PAD SAFETY

- Ensure flip-up pads are securely in position so they don't flip back down causing the vehicle to become unstable.
- Check the lift manufacturer's recommendations if you don't know how to use the contact pad.
- Clean contact pads if oil or grease is present to prevent slippage.

Thank you to Oaktown Collision Inc. for assistance with this article.



SAFE OPERATING PROCEDURES

- Ensure car is at proper lift points, as outlined in the service manual.
- Ensure customers or bystanders are not in the lift area during operation.
- Use both hands and stand behind the hoist while operating.
- Raise the vehicle approximately one foot off the ground and shake it moderately at the front or rear bumper to ensure there is no slippage. Reposition if necessary.
- Ensure lift locking device is engaged and working. Visually check contact points before going under vehicle.
- Never overload a lift. Follow manufacturer's rated capacity attached to lift.

USING JACK STANDS

- At least two, and ideally four jack stands, should be used to stabilize and equalize the load if removing heavy components.
- Always wear proper protective equipment such as safety glasses to protect eyes from falling debris.
- Position jack head on flat, stable structure with even surface underneath vehicle.
- Never lower vehicle onto the stand. This disengages the lift's locking device.
- Never attempt to prevent a vehicle from falling.

