

Retail and wholesale operations depend on forklift trucks to lift and transport goods around their premises. It is imperative for service sector businesses to pay special attention to forklift safety because of the hazards it presents.

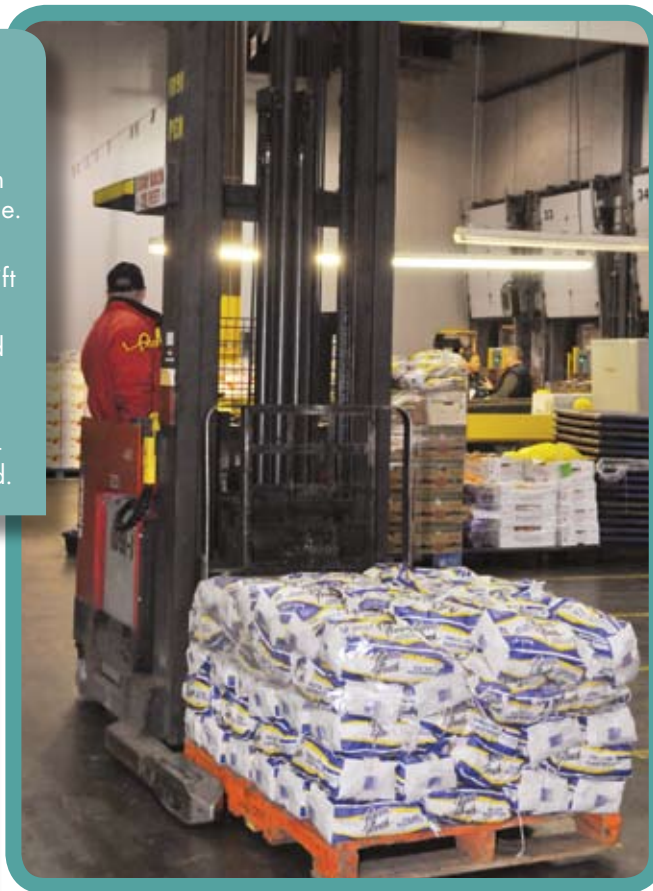
DRIVE SAFE. EVERY TIME

- Keep hands, arms, head, feet and legs inside the forklift truck at all times.
- Travel with forks as close as possible to the floor and tilted back.
- Obey posted traffic signs. Decrease speed at all corners, sound horn and watch the swing of both the rear of the lift truck and the load.
- Maintain eye contact with other drivers. Use hand gestures to acknowledge their presence.
- Look out for oil spots, wet spots, loose objects, holes, rough surfaces, people and vehicles on the floor or roadway.



KNOW YOUR LOAD

- Know the recommended load limit of the forklift and the capacity of the fork and never exceed these limits.
- Ensure the load doesn't block your vision. Always look in the direction of travel. Travel in reverse whenever possible.
- Position the load according to the recommended load centre and keep it close to the front wheels to keep the lift truck stable.
- Raise or lower the fork only when the lift truck is stopped and braked.
- Stay on the forklift when the load is in a raised position and do not allow anyone to stand or walk under the elevated part of the forklift, whether it's loaded or unloaded.



CONDUCTING FORKLIFT INSPECTIONS

Refer to the manufacturer's inspection checklist before operating a forklift. Here are a few important safety tips to consider:

Visual inspection of the lift truck

- Fire extinguisher present, and charged
- All fluid levels (oil, fuel, radiator water)
- Battery fully charged, battery plug connections not loose, worn or dirty
- Bolts, nuts, guards or chains not damaged, missing or loose

Operational pre-use inspection

- Horn working and loud enough to be heard in working environment
- Floor brake, parking brake, dead man seat brake, clutch and gearshift
- All lights and gauges operational on dash control panel
- Lift mechanism, tilt mechanism



CHECK BLIND SPOTS

- Strategically placed mirrors give lift truck drivers a view of pedestrians or other lift trucks operating in other aisles.
- Make visual checks of blind spots wherever mirrors are not present.